

UMPI presents the
Salmagundi Film Series

Feb. 11, March 12, April 23, 6 p.m.
Campus Center, Multi-Purpose Room

Salmagundi, loosely translated, means "a little bit of everything." Every month, we'll focus on a new film and follow the screening with a conversation about the subject matter. All are welcome to attend these free events! Partial funding proudly supported by UMPI Library.

2/11 *The Hate U Give*
3/12 *Hidden Figures*
4/23 *Paper Tigers*

february - may 2019

Cultural CALENDAR

Cultural CALENDAR february - may 2019

New Brunswick Art Bank

2017-2018 Acquisitions

Feb. 1 - March 15

Reed Art Gallery

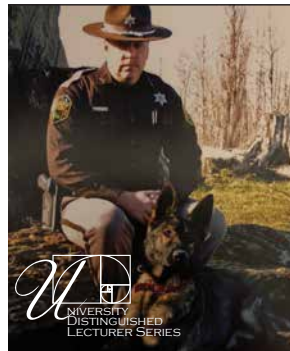
The Gallery is open and free during regular CIL hours.

Opening Reception:
First Friday Feb. 1, 5-7pm

Reception: First Friday March 1, 5-7pm



The New Brunswick Art Bank, established in 1968, celebrates the province's excellence in the visual arts through its collection of artwork by New Brunswick artists. Light refreshments.



Distinguished Student/Alum Lecturer

Mitch Wheeler

Carving Out Your Own Career Path

Tuesday, Feb. 5, 7pm | Campus Center

From the military to law enforcement to healthcare, Mitch Wheeler's career path is unique. With UMPI's help, he was able to go back to school after 17 years in law enforcement and become a Physical Therapist Assistant. Wheeler will share his story during this special DLS Student/Alumni lecture.

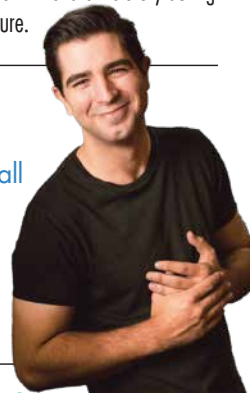


Justin Ruppel

to host UMPI's Annual Variety Show

Thursday, Feb. 28, 6pm | Auditorium in Wieden Hall

Justin Ruppel is a Los Angeles based stand-up comedian, actor, and voice actor. You've seen his amazing impressions on the new USA show "First Impressions" with Dana Carvey, and in the upcoming film "Operation Chromite," starring alongside Liam Neeson.



University Distinguished Lecturer Series

Brittany Ray

Creating Trauma-Informed Schools and Communities by Understanding Adverse Childhood Experiences

Thursday, March 7, 7pm | Campus Center

Understanding adverse childhood experiences (ACEs) and how they impact behavior and learning is key to creating trauma-informed, resilience-focused schools. This presentation serves as the starting point for any teachers, schools, parents, or community members interested in creating and supporting more trauma-informed school cultures. Brittany Ray, Director of TREE: Transforming Rural Experience in Education and 2007 Maine Teacher of the Year, will discuss how we can work together to create environments that foster healing and help students to thrive.



Fundraising Concert Star City Syndicate

Saturday, March 9, 7pm | Auditorium in Wieden Hall

The Star City Syndicate brings their driving, thumping, horn-resounding, soul-burning sound back to UMPI to raise funds for a cause near and dear to their hearts, the Larry Hall Memorial Scholarship. Donations will be gratefully accepted at the door.

UMPI's Inclusion & Civility Task Force presents in conjunction with

Aroostook Acts Against Hate

Shay Stewart-Bouley

Authentic Dialogues:

Talking About Racism and

How to Take a Stand Against Hate

Tuesday, March 26, 12:30pm | Campus Center

During this Diversity Dialogue presentation, Shay Stewart-Bouley, the Executive Director of Community Change, Inc., and the author of the blog *Black Girl in Maine*, will lead an interactive session designed to look critically at racism in our communities and our nation by examining the roots of white supremacy and how the past impacts our present.



Musician Taylor Reed

Wednesday, March 27, 6pm

Campus Center

Taylor Reed, a self-taught solo artist from Tampa, FL, channels her natural creativity and spontaneity with violin, guitar and vocals through a looping station, building an elegantly layered and engrossingly soulful sound. Weaving violin melodies through groove-infused renditions of pop and rock hits, her music elevates any space. Reed's new original work connects on a human level, finding common ground in experiences shared and exposing beauty and hope through new perspective.

Cultural CALENDAR

february - may 2019

www.umpi.edu

★ FMI: UDLS & other events **768.9452** ★

★ Performing Arts **768.9582** ★ Visual Arts **768.9441** ★

Michelle Mishaan

Painted Landscapes of Aroostook County

April 1 - May 10 | Reed Art Gallery

The Gallery is open and free during regular CIL hours.

Opening Reception:

First Friday April 5, 5-7pm
with Artist Talk at 5:30pm

Reception:

First Friday May 3, 5-7pm



Michelle Mishaan is an adjunct art professor for UMPI and currently resides in Madison, Maine. She is moving to Caribou and has been exploring the County landscape during her many commutes. The painted landscapes series is an exploration of the various natural seasons and variety of landscape features from Madawaska to Houlton.

Motivational Speaker

Ken E. Nwadike, Jr.

Friday, April 5, 6:30pm | Campus Center

Ken E. Nwadike, Jr., is a peace activist, motivational speaker, and video journalist. He is the founder of the Free Hugs Project, which produces motivational videos to spread love, inspire change, and raise awareness of social issues. His 'Free Hugs' videos have reached hundreds of millions of views. He has made appearances on news programs and radio broadcasts worldwide, including CNN, *USA Today*, *Good Morning Britain*, and *BBC News*.



Presque Isle Community Players present

LOVE/SICK

Fridays & Saturdays, April 5, 6, 12, and 13

Auditorium in Wieden Hall

A darker cousin to John Cariani's first play, *Almost, Maine*, this unromantic comedy is truly for the romantic in everyone. A collection of nine slightly twisted and completely hilarious short plays, *LOVE/SICK* explores the pain and joy that come with being in love. Directed by Barb Frick Ladner. Visit www.picplayers.com for ticket information.



University Distinguished
Lecturer Series

Stephen L. Ritz

The Power of a Plant:

*A Teacher's Odyssey to Grow
Healthy Minds and Schools*

Tuesday, April 9, 7pm

Campus Center

Stephen Ritz — an urban farmer, award-winning educator, and the founder of the Green Bronx Machine — will discuss how he and his students farmed their way from the poorest congressional district in the country all the way to the White House and beyond.



Ritz's talk serves as the kick-off for University Day, with a full day of events following on Wednesday, April 10. From about 8 a.m. to 4:30 p.m., about 130 students are expected to offer talks and presentations on their research and community service.

Comedian

Sammy Obeid

Saturday, April 13, 7pm | Campus Center

Sammy Obeid has appeared on *Conan* and NBC's *America's Got Talent*. He holds the world record for performing 1,001 consecutive nights of comedy.



Trash to Fashion

Monday, April 22, 6-7pm

Campus Center

The Trash-to-Fashion show will be held in honor of Earth Day. Open to all artists, designers, students, and community members. \$5 per entry fee, and a suggested \$5 ticket price. Trash-to-Fashion is a movement designed to bring awareness about how we view waste and an understanding of how waste impacts the land. If you would like to participate, please contact Hyrum Benson at hyrum.benson@maine.edu.

UMPI/Community Band

Spring Concert

Monday, April 29, 7pm

Auditorium in Wieden Hall

(snow date: Monday, May 6)

The UMPI/Community Band, a unique performing ensemble of about 50 members, will perform a concert conducted by Jon Simonoff. A variety of music will be performed including classic band literature, settings of choral music for concert band, marches, and more contemporary works. The UMPI/Community Band is composed of local and traveling musicians from as young as middle school age through retirement. This event is free and open to the public. For more information, contact Jon Simonoff at jonsimonoff@gmail.com.



BFA Senior Art Show

Jami Cass

AWAY

May 2-12 | Pullen Art Gallery

The Gallery is open and free during
regular Pullen Hall hours.

Opening Reception:

First Friday May 3, 6-8pm
with Artist Talk at 6:30pm



Jami Cass' paintings focus on the beauty of the rural and urban landscape juxtaposed with the objects that mar it. Her current body of work is made on assembled and sewn nonrecyclable plastic bags, tarps and fabrics. Cass aims to draw attention to the overwhelming amount of plastic and trash thoughtlessly discarded. Her paintings explore the question of where it all goes when we throw our garbage *Away*.

Northern Maine Chamber Society

Spring Concert

Sunday, May 5, 3pm | Auditorium in Wieden Hall

The Northern Maine Chamber Society orchestra, under the direction of Kevin Kinsey, will be performing various classical and pop music. Smaller ensembles will also be featured. This event is free and open to the public. For more information, contact Sue Herold at 207-473-7698.

The University of Maine at Presque Isle is an EEO/AA employer, and does not discriminate on the grounds of race, color, religion, sex, sexual orientation, transgender status, gender expression, national origin, citizenship status, age, disability, genetic information or veteran's status in employment, education, and all other programs and activities. The following person has been designated to handle inquiries regarding non-discrimination policies: Sarah E. Harebo, Director of Equal Opportunity, 101 North Stevens Hall, University of Maine, Orono, ME 04469-5754, 207.581.1226, TTY 711 (Maine Relay System).

University of Maine at Presque Isle ★ One of Maine's Public Universities